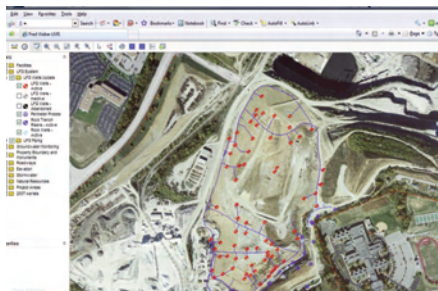


PROJECT SPOTLIGHT | WEB-BASED GIS LANDFILL MANAGEMENT SYSTEM - FRED WEBER, INC. - MARYLAND HEIGHTS, MISSOURI

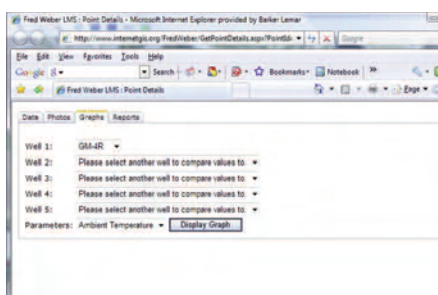
SCOPE OF PROJECT

Fred Weber, Inc. retained **BARKER LEMAR** to develop a web-based Landfill Management System (LMS) with a geographic information system (GIS) user interface. The LMS would allow Fred Weber, Inc. employees to view site configuration; upload, view, and delete site photos; upload and view analytical data from excel documents; and view and export custom reports. A document management section was also requested to allow Fred Weber, Inc. employees access to facility and project related documents to the LMS.

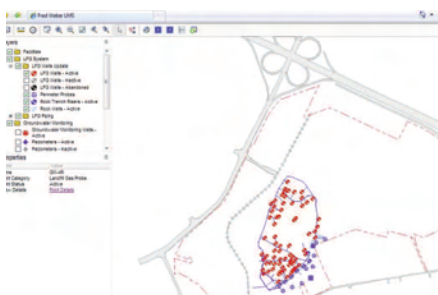


IMPLEMENTATION

BARKER LEMAR met with Fred Weber, Inc. representatives to plan the creation of a web-based GIS system. Based on priorities established during the initial meeting, AutoCAD files of Fred Weber, Inc. facilities were delivered to **BARKER LEMAR** for conversion to files compatible with Autodesk Mapguide Studio. Once converted, these file provided the foundation for the LMS.



After the basemap was completed, **BARKER LEMAR** designed and developed database structure and schema for the GIS system to provide functionality to allow Fred Weber, Inc. employees access to site photos, analytical data, and user-defined reports. Password protection was setup to prevent unauthorized access to the website. Multiple authorization levels have also been established to grant or restrict access to particular areas of the website, based on a user's login name and password.



SERVICES

Custom programming on web-based application, custom report development.

TIMELINE

Project Start Date: October 2007

Project Completed: Ongoing